

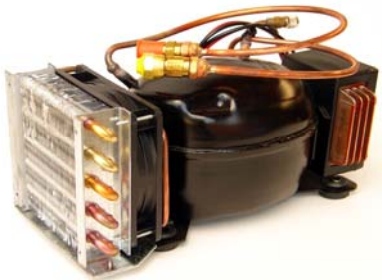


Vitrifrigo Kitset Refrigeration

BUILD YOUR OWN FRIDGE OR FREEZER
KITSET PACKAGES FOR EASY INSTALLATION INTO YOUR ON-BOARD ICE BOX

Each Kitset Requires 3 Components: (sold separately)

- 1) 12/24v Danfloss Compressor
- 2) Thermostat for Temperature Adjustment
- 3) Pre Gased Cold Plate



COMPRESSOR - 12/24 VOLT

Suitable for PT and S plates. Pre-gassed and Quick coupled

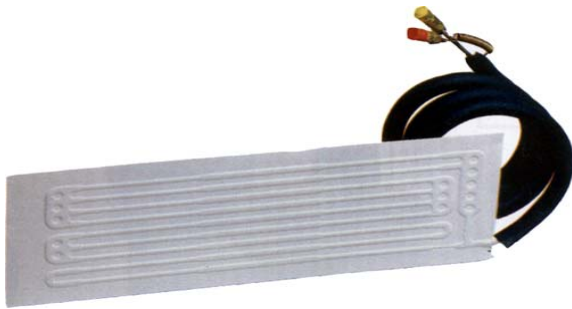
Length 280mm Width 150mm Height 170mm

ND20/35QC

THERMOSTAT

Vitrifrigo thermostat.

SA1490 Fridge Thermostat
K50 Freezer Thermostat



COLD PLATES

Pre-gassed and Quick Coupled for easy connection to compressor.

Model	Capacity (litres)	Watts	Amps	Dimensions (Width x Height)
PT1QC (indent)	40	33	2.8	325 x 215
PT2QC (indent)	60	42	3.6	350 x 250
PT3QC	80	42	3.6	585 x 215
PT4QC	110	42	3.6	350 x 350
PT5QC	130	42	3.6	805 x 230
PT6QC	180	51	4.1	750 x 630
PT7QC	250	59	4.9	1300 x 290



ICE BOXES - Indent Only

Pre-gassed and Quick Coupled for easy connection to compressor.

Model	Capacity (litres)	Watts	Amps	Dimensions (W x H x D mm)
S1QC	80	42	3.6	250 x 210 x 80
S2QC	130	51	4.1	342 x 230 x 96
S3QC	130	51	4.1	318 x 230 x 96
S5QC	180	51	4.1	295 x 310 x 110